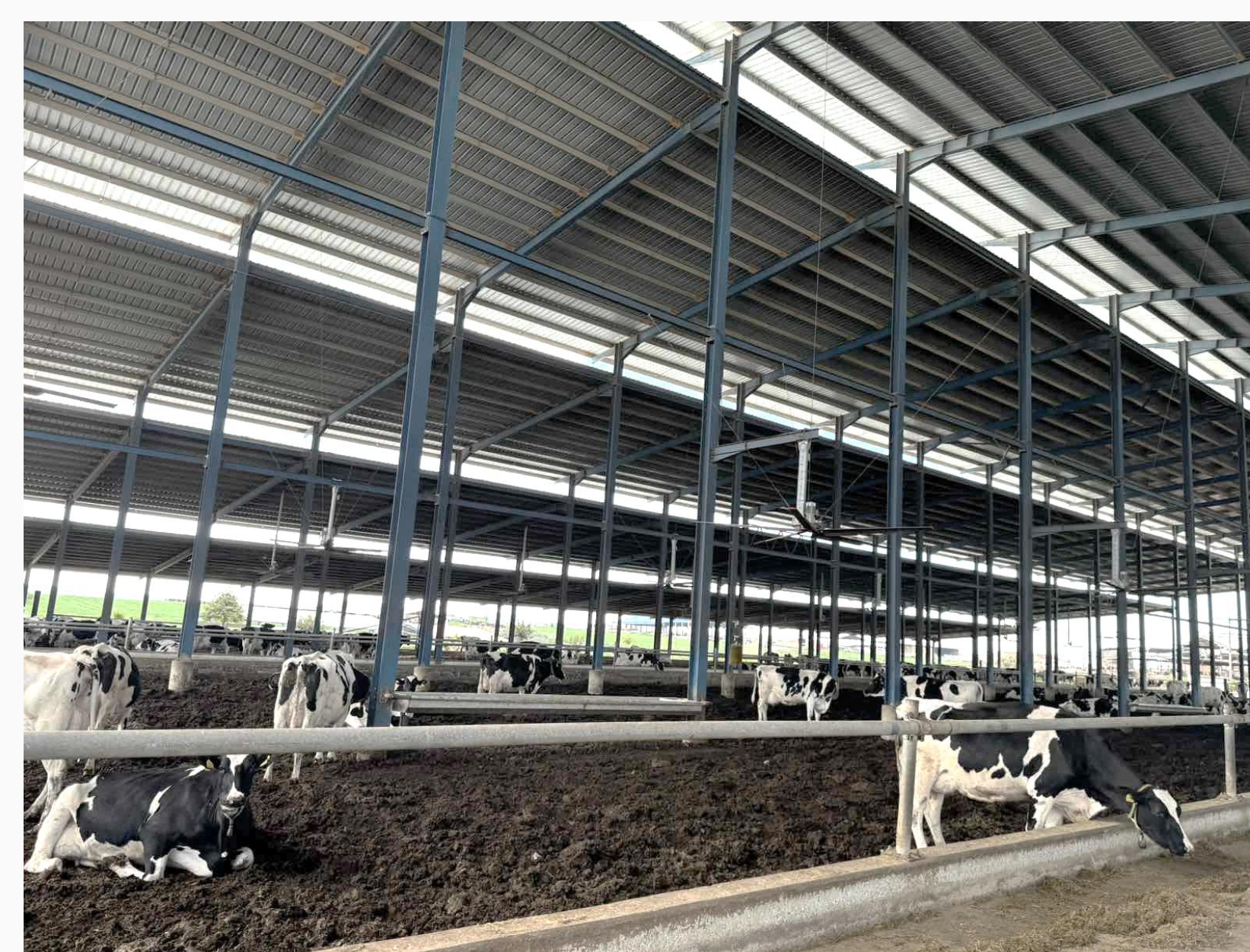
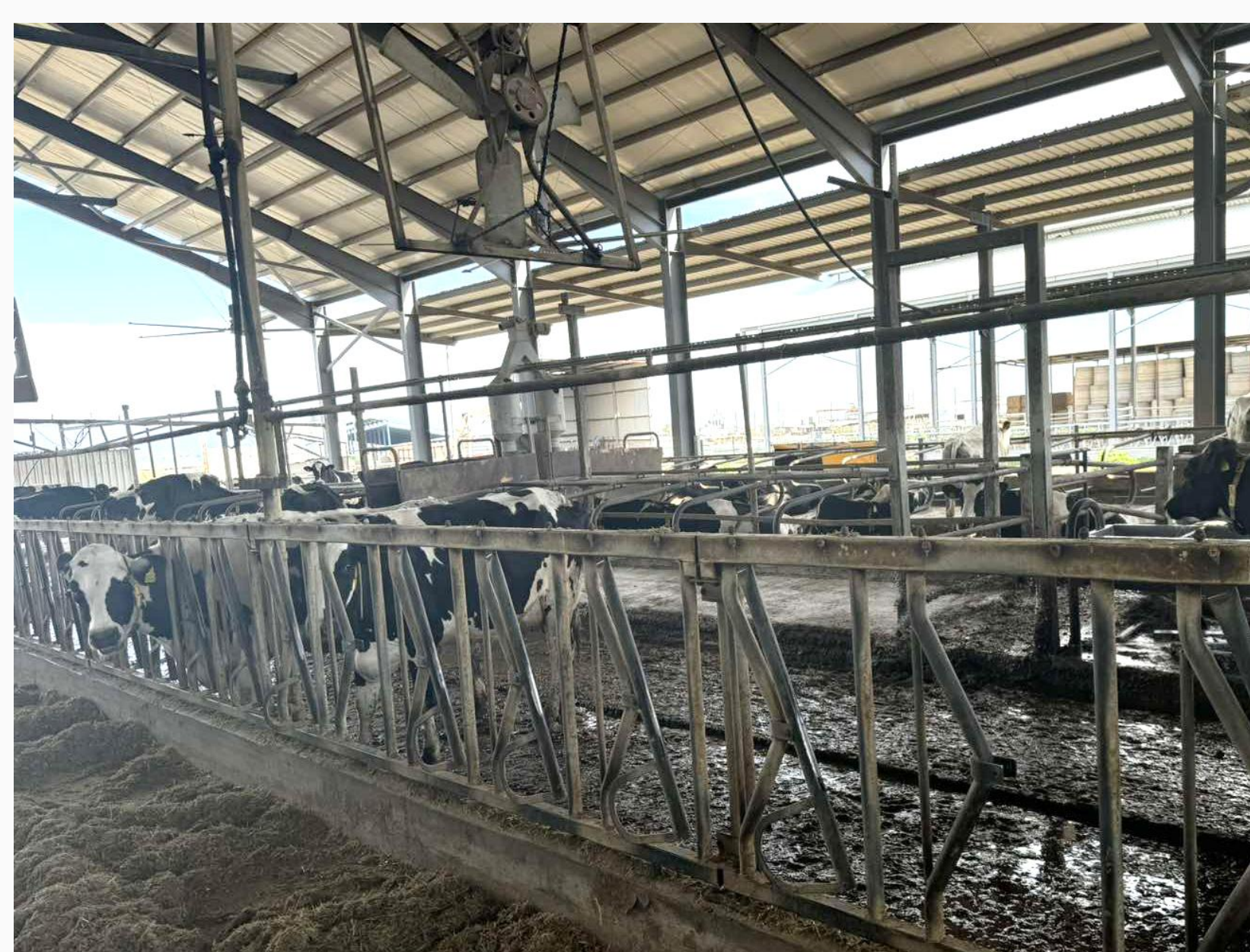
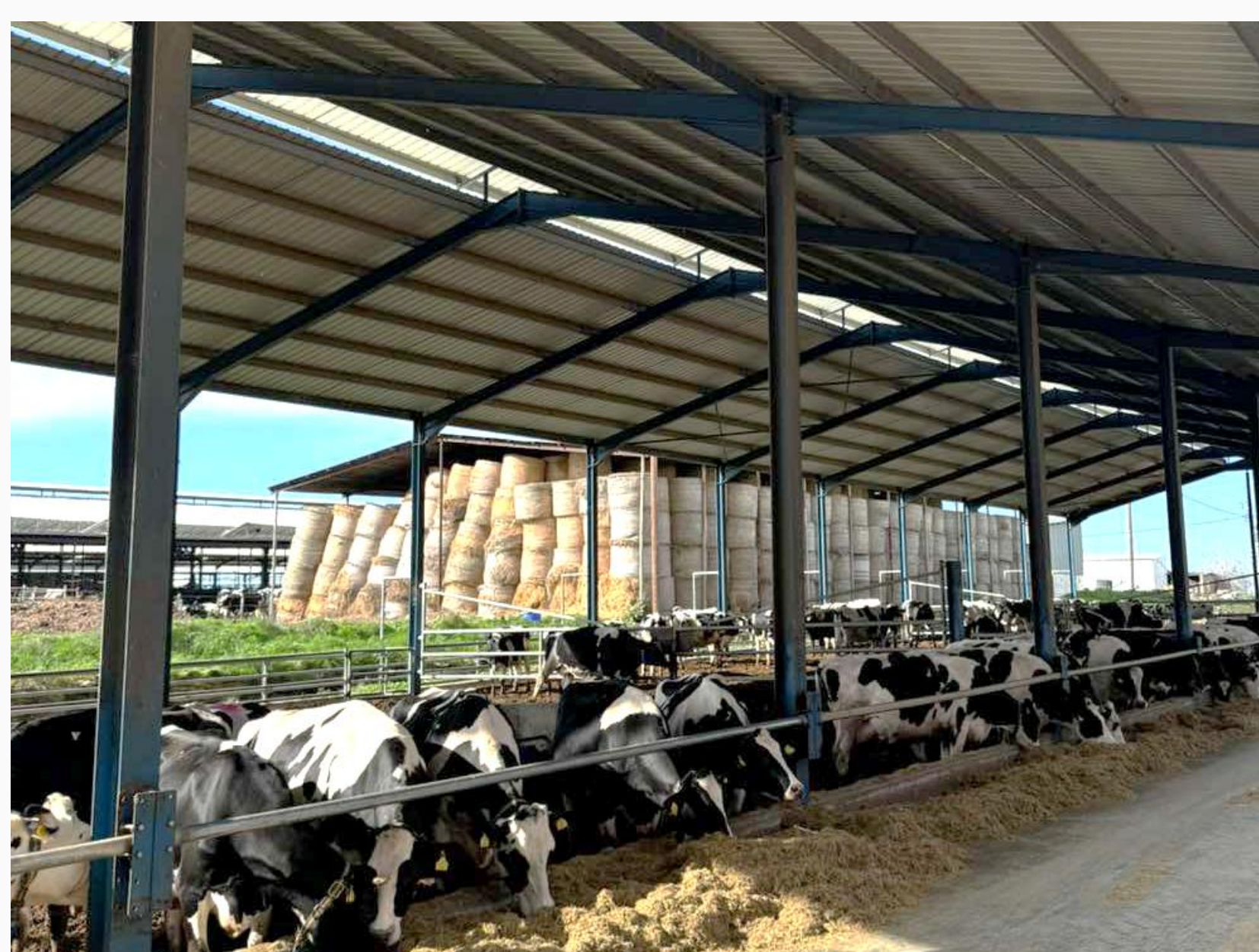


On the ground in the South Nicosia – Idalion Municipality exploring local cattle farms!

Livestock management in an essence is managing the daily activities that a farmer carries out as part of his efforts to raise his/her livestock. Animal husbandry has a significant impact on the world environment. Cattle manure can lead to significant GHGs emissions (methane, carbon dioxide, nitrous oxide and fluorinated compounds) and odorant.

Livestock Premises

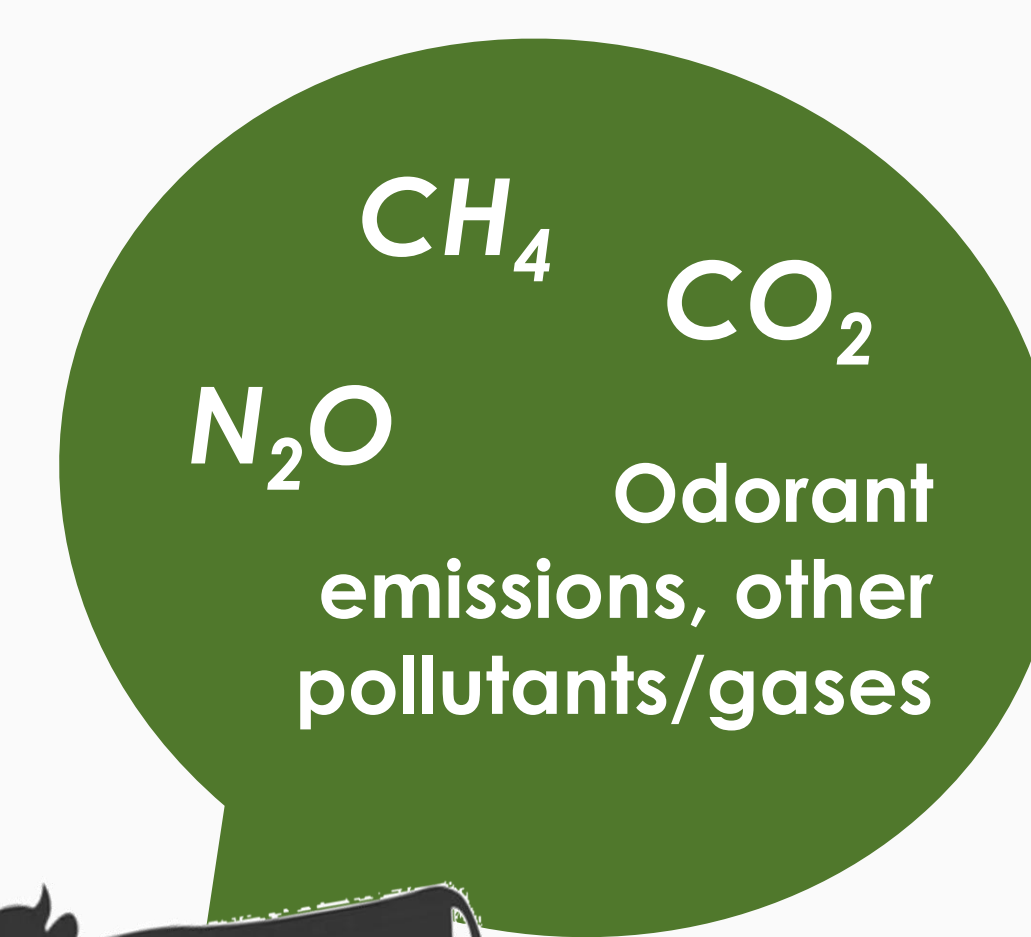


Livestock Manure



70% of manure is produced by cows while they eat.

Air quality in the vicinity of livestock farms is affected by several interrelated factors.



Enterprise and Academic Partners



CYRIC



University of Cyprus



OPEN UNIVERSITY OF CYPRUS



Supported by



Funded by the European Union
NextGenerationEU

Cyprus tomorrow
RECOVERY AND RESILIENCE PLAN



Republic of Cyprus



RESEARCH & INNOVATION FOUNDATION

The Project is funded by the European Union Recovery and Resilience Facility of the NextGenerationEU instrument, through the Research and Innovation Foundation.